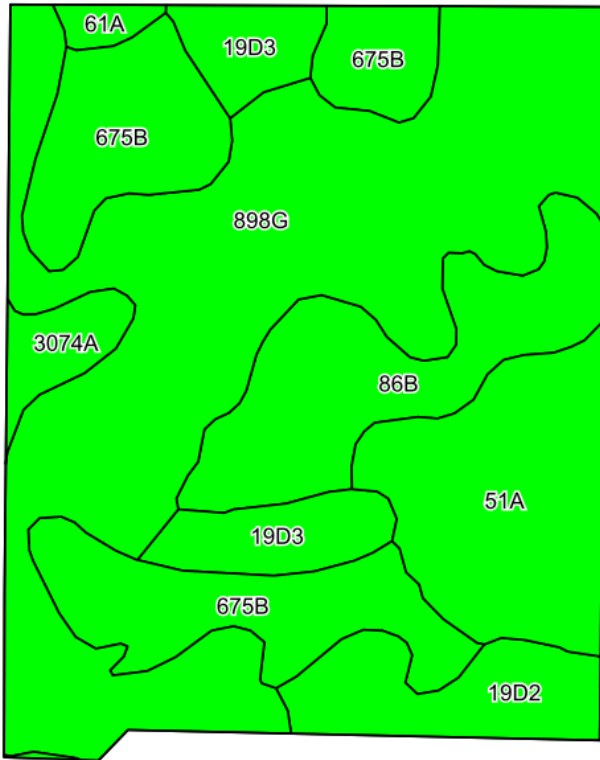
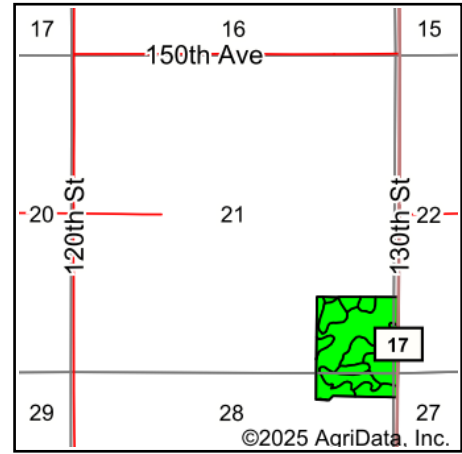


Soils Map



©2025 AgriData, Inc.

Soils data provided by USDA and NRCS.



©2025 AgriData, Inc.

State: **Illinois**
 County: **Mercer**
 Location: **21-15N-4W**
 Township: **Duncan**
 Acres: **51.94**
 Date: **10/15/2025**



Maps Provided By:



© AgriData, Inc. 2023

www.AgriDataInc.com



Area Symbol: IL131, Soil Area Version: 20

Code	Soil Description	Acres	Percent of field	Il. State Productivity Index Legend	Restrictive Layer	Soil Drainage	*Subsoil rooting ^a	*Corn Bu/A	*Soybeans Bu/A	*Wheat Bu/A	*Oats Bu/A ^b	*Crop productivity index for optimum management	*n NCCPI Overall
**898G	Hickory-Sylvan silt loams, 35 to 60 percent slopes	21.82	42.1%		> 6.5ft.	Well drained	FAV	**62	**21	**25	**29	**46	20
**675B	Greenbush silt loam, 2 to 5 percent slopes	9.51	18.3%		> 6.5ft.	Well drained	FAV	**180	**57	**69	**95	**131	91
51A	Muscataune silt loam, 0 to 2 percent slopes	6.53	12.6%		> 6.5ft.	Somewhat poorly drained	FAV	200	64	75	104	147	95
**86B	Osco silt loam, 2 to 5 percent slopes	6.13	11.8%		> 6.5ft.	Well drained	FAV	**187	**59	**74	**100	**138	92
**19D3	Sylvan silty clay loam, 10 to 18 percent slopes, severely eroded	3.22	6.2%		> 6.5ft.	Well drained	FAV	**118	**39	**47	**55	**87	68

Soils data provided by USDA and NRCS. Soils data provided by University of Illinois at Champaign-Urbana.



Code	Soil Description	Acres	Percent of field	Il. State Productivity Index Legend	Restrictive Layer	Soil Drainage	*Subsoil rooting <i>a</i>	*Corn Bu/A	*Soybeans Bu/A	*Wheat Bu/A	*Oats Bu/A <i>b</i>	*Crop productivity index for optimum management	*n NCCPI Overall
**19D2	Sylvan silt loam, 10 to 18 percent slopes, eroded	3.09	5.9%		> 6.5ft.	Well drained	FAV	**131	**43	**52	**61	**97	74
**3074A	Radford silt loam, 0 to 2 percent slopes, frequently flooded	1.21	2.3%		> 6.5ft.	Somewhat poorly drained	FAV	**186	**58	**73	**99	**136	71
61A	Atterberry silt loam, 0 to 2 percent slopes	0.43	0.8%		> 6.5ft.	Somewhat poorly drained	FAV	182	56	71	98	132	84
Weighted Average								127.2	41.1	49.6	64.6	93.5	*n 58.8

Table: Optimum Crop Productivity Ratings for Illinois Soil EFOTG are sourced from Bulletin 811 calculated Map Unit Base Yield Indices, and adjusted (Adj) for slope, erosion, and surface texture. Publication Date: 01-28-2025

Crop yields and productivity (B811 EFOTG) are maintained at the following USDA web site: 2023 Illinois Soil Productivity and Yield Indices: <https://efotg.sc.egov.usda.gov/#/state/IL/documents/section=2&folder=52809>

* The flood/pond factor has been removed for B811 indexes and yields.

** Base indexes from Bulletin 811 adjusted for slope, erosion, and surface texture according to the Il. Soils EFOTG

b Soils in the southern region were not rated for oats and are shown with a zero "0".

*n: The aggregation method is "Weighted Average using all components"